

Al Zorah Pavilion by Annabel Karim Kassar

[February 14, 2014](#) [Marco Rinaldi](#)



The pavilion is included in the masterplan, from AED 220 billion coastal development launched in Ajman earlier in 2008, is a joint venture between the Government of Ajman and Solidere International Limited.



AAs Architecture

Located along Ajman's beachfront and creeks, Al Zorah will build on the emirate's natural beauty, tradition, openness and culture of innovation to transform Ajman into a world class residential, tourism and investment destination.



The city will be self-contained with varied residences, offices, retail, schools, hotels, hospitals and leisure facilities including a championship golf course, marinas and a number of five-star resort hotels.

AAs Architecture



Construction will be restricted to 235 million square feet with the remaining expanse reserved for beaches, green spaces, and open squares, an approach that will provide over 60 per cent of the total land area for public spaces.



The Al Zorah Pavilion in Ajman is a 3 500 Msq sales center. It is sheltered under a magnificent canopy illuminated and decorated as an ornamental tent.

AAs Architecture



Spaces open up from a folded crossed cut slab: the slope of the folded roof starts from the entrance and reaches up to the highest point where it leads to terraced/belvedere spaces for looking out the sea.



The roof is clad with ceramic and steel tiles following a geometric pattern. Colorful and shining by day time, it will be lit up with LEED tricolored projectors by night; it is an installation by CAI light.

AAs Architecture



The entrance is at the cut between the roof-scape and has a well-framed view out towards the natural mangrove. The entire building is like a balcony looking out towards Al Zorah's area.



The folded roof is reminiscent of the existing topographical strata leading down to the water.

AAs Architecture

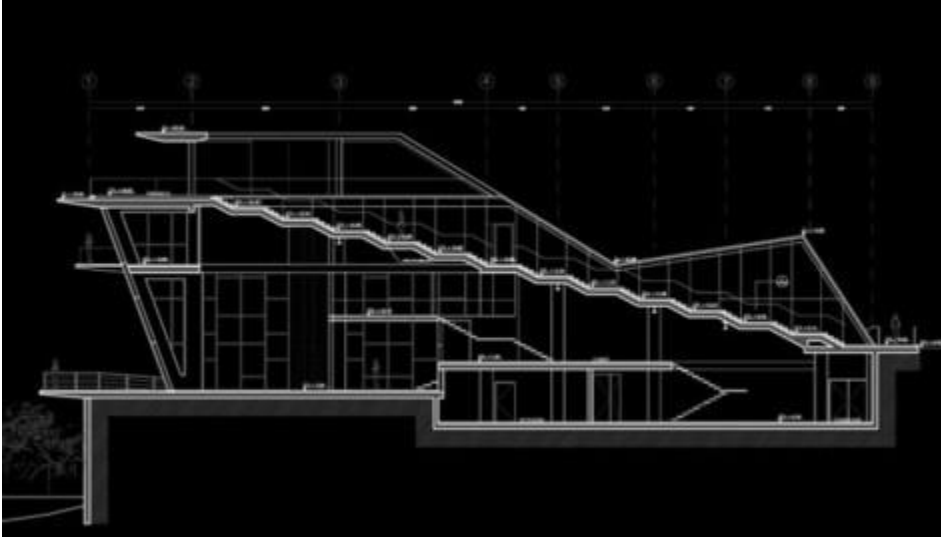


The pavilion houses an Internal Auditorium of 150 seats extending to the exterior for outdoor events, an exhibition space, a Café with a terrace, a guest house at the roof top level and an administrative floor.

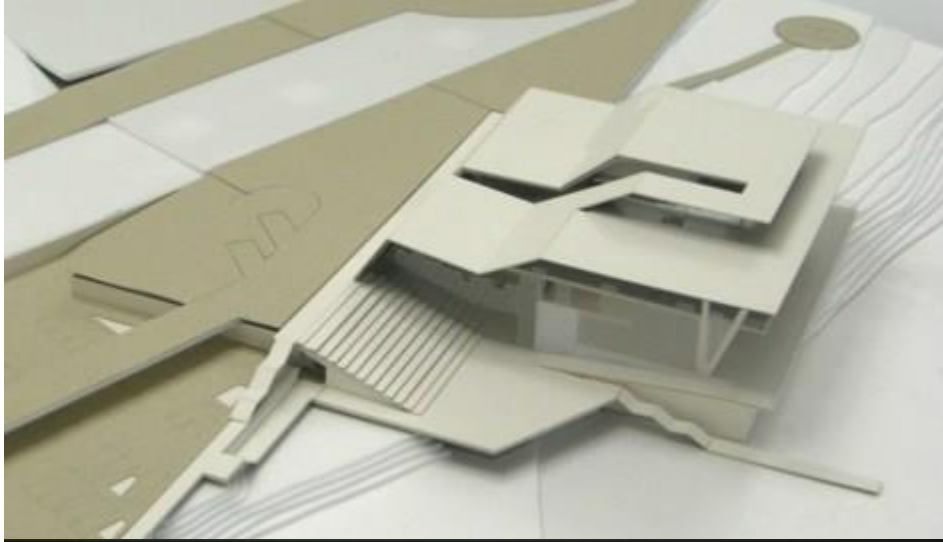
AAs Architecture



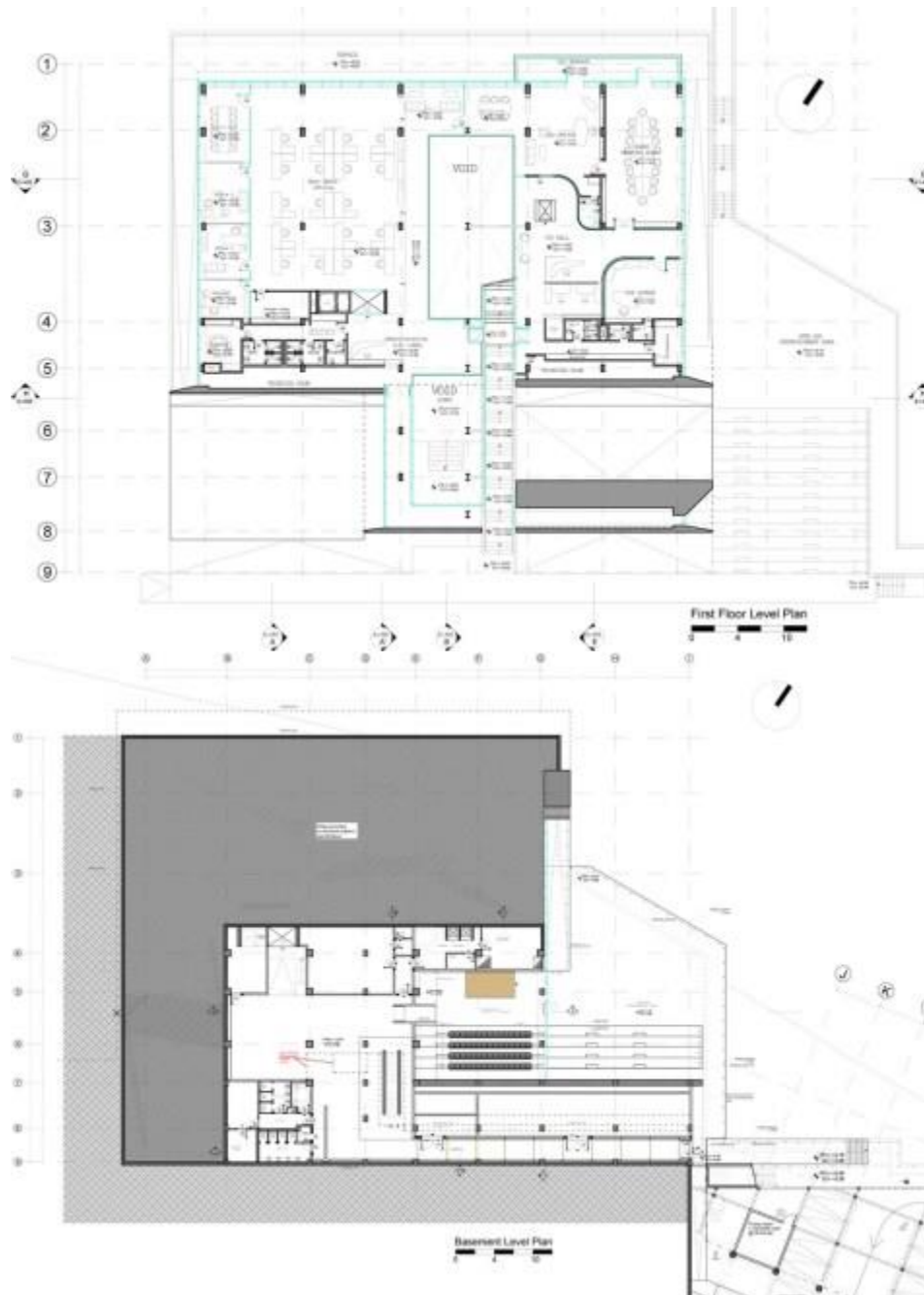
AAs Architecture



AAs Architecture



AAs Architecture



AAs Architecture



Location: Ajman, [United Arab Emirates](#)

Architects: [Annabel Karim Kassar](#)

Project Architect: Rabih Zeidan

Collaborators: Walid Hamze, Nehmat Alameh, Violaine Jeantet, Jean Sfeir

Lighting Design: Cai Light

Area: 3,500 sqm

Year: 2014

Photographs: [Tony Elieh](#)